



April 2026 Edition

A Season of Growth and Perspective

April brings the first true taste of spring, and with it a sense of renewal that is being felt across our global network.

From the jacarandas blooming in Mexico City to the cherry blossoms emerging in Seoul, the signs of transition are everywhere. Even in Saskatoon, Saskatchewan, Canada, where winter still lingers a little longer than most would like, the warmth of the sun signals that change is underway. Over the past few days, many of our partners and associates have shared photos of what early April looks like in their part of the world different landscapes and climates, yet all reflecting the same quiet shift toward growth and what comes next. In many ways, this mirrors exactly where we are as an organization.



April 2026 — Prague, Czechia. Early signs of spring across the city.
Photo submitted by Nico Cortes, GTC INC Associate.

The past three months at GTC INC have been about planting seeds—building connections, initiating conversations, and laying the groundwork for relationships that require time, care, and understanding to develop properly.

Manufacturer-distributor collaboration is never immediate; it evolves through market study, testing, configuring, and adapting, and while these stages can at times feel like growing pains, they are in fact the clearest signals that progress is being made.

Some of my clearest thinking comes from my daily running ritual. Whether at the track or out among the trees, that balance between effort and rhythm has become a constant in my life—not simply as a form of training, but as a space to reflect, to sort things out, and to think more creatively. During a recent outing, I found myself settling into what I've come to recognize as a state of 'heightened awareness,' where everything becomes calm, focused, and unexpectedly clear. It is in these moments that the usual noise fades, where even the discomforts of the day seem to recede, and where perspective has a way of presenting itself without force.

For a brief stretch, I ran behind a pacer wearing a shirt that read, "Don't dwell in the possibilities," and the message stayed with me well beyond the run itself. In both running and business, there is a natural tendency to overthink—to anticipate outcomes, to project challenges, and to try to shape what has not yet fully formed. Yet real progress rarely comes from dwelling; it comes from movement, engagement, and a willingness to remain present in the process as it unfolds.

This has, in many respects, defined our first quarter.



April 2026 — Seoul, South Korea. Cherry blossoms in full bloom marking the arrival of spring. Photo submitted by Jenny Kim.

Over the past three months, our time on the ground in South Korea, Taiwan, India, Bangladesh, Singapore, and Hong Kong has reinforced a number of important lessons. While each market brings its own complexity, the underlying themes are remarkably consistent. Meaningful relationships are built on alignment rather than opportunity alone; listening remains one of the most undervalued yet essential skills; and trust, while requiring time and consistency to establish, has the ability to accelerate everything once it is in place. Perhaps most importantly, every business conversation is shaped by the human story behind it, and understanding that context changes the way we engage.



In my role, I have the opportunity to meet many leaders, and one observation continues to surface with increasing clarity: leadership can, at times, be a very solitary experience. Much like the long-distance runner, many are carrying more than they outwardly show, navigating pressures, transitions, and decisions that are not easily shared. Whether it is a question of direction, a sense of diminished relevance, or simply the weight of responsibility, there is often a need for space—to reflect, to speak openly, and to regain clarity without judgment.

It is perhaps not surprising, then, that across our global conversations there is a growing demand for executive language and life coaching. Leaders today are seeking more than transactional support; they are looking for partners who can help them sharpen their thinking, refine their communication, and navigate complexity with greater confidence and composure. In this context, the ability to listen, to guide, and to provide perspective becomes just as valuable as any market insight.

At GTC INC, we see this as a natural extension of our work. Building effective global trade relationships goes beyond simply connecting businesses—it requires aligning people, perspectives, and expectations so those relationships can develop with clarity and purpose. As our network evolves, so too does our portfolio, particularly in areas such as healthcare solutions and essential consumer goods, both of which are featured in this April edition. While diverse in application, these efforts are unified by a common objective: to contribute to the overall quality of life in the markets we serve, ensuring that what we build together delivers not only commercial value, but meaningful and lasting impact.

As we move into the second quarter, our direction becomes more defined.



The first quarter has been about awareness—about taking the time to understand before acting. The second quarter now calls for thoughtful execution, where the insights gained begin to translate into structured engagement, strengthened partnerships, and forward momentum across our network. This is not about accelerating for the sake of speed, but about moving with intention, supported by the foundations that have been carefully established.

The seeds planted in Q1 are beginning to take root, and while each will develop at its own pace, the focus remains the same: to stay engaged, to remain present, and to continue building with consistency and trust.

In the end, sustainable growth—whether in running, in relationships, or in global trade—comes not from forcing outcomes, but from maintaining clarity, discipline, and a steady understanding of where we are going and how we intend to get there—an approach reflected in this edition of CHECKPOINT as a portfolio brief of our progress.

-John Raymond Malinowski, GTC INC President.

Global Portfolio Brief Update

April's "Global Portfolio Brief Update" reflects our dual strength in global trade and applied innovation—connecting commodities, advanced technologies, and human capital services across international markets.

This month's CHECKPOINT presents a curated set of information bulletins highlighting how our eight core pillars translate into real-world products, services, and partnerships. Together, they reflect our commitment to delivering solutions that drive performance while contributing to an enhanced overall quality of life across the markets we serve.

What We're Featuring This Month

From Commodities & Food Systems – 'Canola Oil'

Premium Canadian-sourced supply delivering consistent quality and reliable performance for global food production and processing.

From Industrial & Automation Technologies – 'Cybernetics AGV Carriers'

Autonomous material handling solutions improving efficiency, safety, and scalability in modern logistics environments.

From Dental & Digital Manufacturing – 'Gencore Dental Milling Machines (Canada & Mexico – English & Spanish)'

AI-driven systems enabling precise, consistent, and scalable dental production workflows.

From Raw Materials & Global Trade – 'Natural Global Rubber Supply'

Integrated sourcing solutions ensuring consistent quality, reduced risk, and dependable supply across industrial applications.

From Professional Services – 'Business English Language Services'

Practical communication solutions strengthening global business effectiveness and leadership capability.

April 2026 Strategic Spotlight: Partnership Development



We conclude with a recent 'letter of understanding' announcement between GTC and Gootipa, a Bangladesh-based leather goods brand led by entrepreneur Taslima Miji. This partnership reflects a shared focus on ethical production, women's empowerment, and sustainable growth, while supporting GTC's continued expansion into lifestyle products with purpose-driven partners.



PREMIUM CANADIAN CANOLA OIL SUPPLY

- Consistent Quality
- Reliable Supply
- Extended Fry Life.



Performance You Can Rely On. Quality You Can Trust.

We supply premium Canadian canola oil designed to deliver consistent quality, stable frying performance, and dependable supply—supporting operational efficiency and product consistency.

Product: Refined, Bleached & Deodorized (RBD) Canola Oil

Why Canadian Canola Oil Performs Better?

1. Consistent Quality from Canada

Canada is the global leader in canola production, recognized for:

- Strict food safety and quality standards
- Advanced agricultural and processing practices
- Reliable, traceable supply chains

2. Consistent Cooking & Processing Results

Designed for commercial applications, our canola oil provides:

- High smoke point (~204–240°C / 400–468°F)
- Neutral taste and light texture
- Excellent oxidative stability
- Clean frying performance
- ✓ Extends frying cycles and reduces oil replacement frequency
- ✓ Supports consistent food quality across batches

3. Health & Nutritional Benefits

- Low in saturated fat
- Rich in Omega-3 & Omega-9 fatty acids
- Contains Vitamin E
- Cholesterol-free

4. Lower Operating Costs for High-Volume Users

- Longer fry life = reduced oil usage
- Stable performance = consistent output
- Efficient sourcing = optimized cost structure

Connect with GTC INC

Facebook: [GTCINC.GlobalTradeConnect](https://www.facebook.com/GTCINC.GlobalTradeConnect) | LinkedIn: [gtc-inc-globaltradeconnect](https://www.linkedin.com/company/gtc-inc-globaltradeconnect)
www.globaltradeconnect.net

Applications Across Industries

Food Service & Processing

- Deep frying (restaurants, QSRs, catering)
- Snack food production
- Baking and confectionery
- Sauces, dressings, and spreads

Industrial & Commercial Use

- Food manufacturing inputs
- Ingredient supply chains
- Biofuel applications

Retail & Private Label

- Bottled edible oil
- Private label programs
- Consumer-ready packaging

Supply & Packaging Options

- Bulk shipments (tankers / flexitanks)
- IBC totes
- Drums (200L)
- Custom retail packaging (upon request)
- ✓ Reliable year-round supply
- ✓ Efficient logistics and delivery
- ✓ Scalable volumes to meet demand



Quality & Safety

Our Canadian canola oil is produced in accordance with established food safety and handling standards:

- Non-hazardous classification under GHS and Canadian regulations
- Produced within Canadian food safety frameworks
- Stable under normal storage and handling conditions
- High flash point supporting safe, high-temperature applications

Global Supply & Logistics

We support efficient delivery of Canadian canola oil to domestic and international markets:

- Bulk and packaged export solutions
- CIF and FOB contract options
- Standard export documentation support
- Coordinated logistics and delivery scheduling

***Ensuring reliable, on-time delivery from origin to destination.**

Our Commitment

- Consistent, high-quality product
- Reliable and transparent supply
- Responsive, solutions-focused service
- Long-term partnership approach

Let's Work Together

Partner with us to secure a dependable supply of premium Canadian canola oil.

Contact us today to secure your supply and request:

- Pricing & quotations
- Samples
- Product specifications
- Customized supply solutions

Canadian Canola Oil | Consistent. Reliable. Proven.

Connect with GTC INC

Facebook: [GTCINC.GlobalTradeConnect](https://www.facebook.com/GTCINC.GlobalTradeConnect) | LinkedIn: [gtc-inc-globaltradeconnect](https://www.linkedin.com/company/gtc-inc-globaltradeconnect)

www.globaltradeconnect.net



Manufactured by Cybernetics
Marketed & Integrated by GTC INC

AUTONOMOUS GUIDED VEHICLE (AGV)

Smart, Scalable Material Handling
for Industry 4.0



The **Autonomous Guided Vehicle (AGV)** is an advanced material handling solution developed and manufactured by Cybernetics Hi-Tech Solutions, a leader in robotics and automation. Their partner, **GTC INC – 'Global Trade Connect'** serves as the **authorized marketing, distribution, and integration partner**, delivering these solutions to global industrial markets.

Transforming Intralogistics with Intelligent Automation

Designed for modern industrial environments, the AGV combines LiDAR and vision-based navigation with real-time decision-making to automate material transport across factories, warehouses, and logistics hubs—improving efficiency, safety, and scalability.

Why This AGV Solution?

- **Hybrid AI Navigation (LiDAR + Vision)**
Real-time image processing for precision movement and obstacle avoidance
- **Flexible Payload Range**
Configurable for 100 kg, 500 kg, and 1000 kg
- **Indoor & Outdoor Operations**
Versatile deployment across industrial environments
- **Proven in Live Industrial Environments**
Successfully deployed in live manufacturing environments
- **Scalable Automation**
Expand from single units to full fleet systems

Key Benefits

Increased Productivity

Automates repetitive intralogistics tasks such as moving materials between production lines, storage, and dispatch areas. The AGV ensures consistent cycle times, reduces bottlenecks, and supports continuous workflow—especially in multi-shift operations.

Cost Efficiency

Reduces reliance on manual transport for routine tasks, lowering labor intensity and minimizing handling inefficiencies. Standardized routes and operations also reduce errors, delays, and idle time across the facility.

Enhanced Safety

Equipped with LiDAR and vision-based navigation, the AGV detects obstacles and operates with controlled movement, reducing collision risks and improving safety in shared human-machine environments.

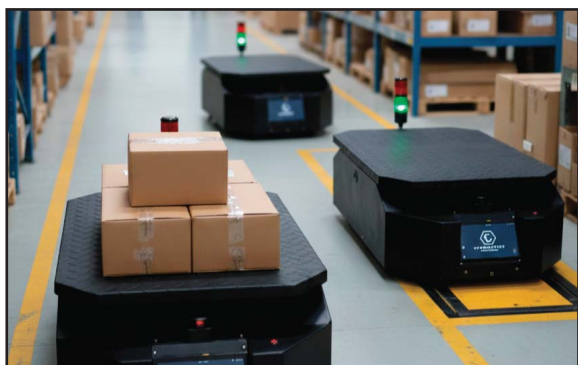
Process Optimization

Creates predictable, repeatable material flow across the facility. Helps align logistics with production schedules, improving coordination between departments and enabling more streamlined operations.

Proven Deployment

- ✓ **Used by 'The Urmi Group' (RMG Manufacturing Facility)**
 - 3 AGV units deployed and fully operational
 - Payload range: 60–100 kg
 - Actively supporting internal material movement within a live production environment
 - Validated in live production conditions with continuous operational performance.

This deployment demonstrates real-world reliability in a high-volume garment manufacturing setup, where consistent material flow is critical to maintaining production efficiency. 📧 **Contact:** contact@globaltradeconnect.net



Applications

- **Garments & Textile (RMG)**

Transport of fabrics, cut panels, trims, and finished goods between cutting, sewing, finishing, and packing areas

- **Warehousing & Distribution Centers**

Movement of goods between receiving, storage, picking, and dispatch zones

- **Manufacturing & Assembly Lines**

Line-side delivery of raw materials, components, and work-in-progress (WIP) items

- **E-commerce Fulfillment Centers**

High-frequency internal logistics for order picking, sorting, and packing workflows

- **FMCG & Consumer Goods Production**

Transport of packaged goods, cartons, and pallets across production and storage areas

- **Pharmaceutical & Healthcare Manufacturing**

Controlled movement of sensitive materials, ensuring consistency and reduced human handling

- **Food & Beverage Processing**

Hygienic and repeatable transport of ingredients, packaging materials, and finished products

- **Airports & Cargo Terminals**

Automated baggage, cargo, and container movement within logistics zones

- **Ports & Industrial Logistics Hubs**

Internal transport of goods within large-scale industrial or shipping environments

- **Electronics & Precision Manufacturing**

Safe handling of delicate components with minimal vibration and human interference

- **Automotive & Heavy Industry**

Movement of parts, assemblies, and tools across production lines

- **Smart Factories & Industry 4.0 Environments**

Integrated with digital systems for automated, data-driven material flow

Core Features

Hybrid Navigation System

- LiDAR + Vision-guided navigation
- Real-time image processing for path planning
- Dynamic obstacle avoidance

Safety & Control

- Multi-layer obstacle detection
- Emergency stop system
- Smooth acceleration and braking control

Autonomous Intelligence

- Real-time decision-making
- Adaptive route optimization
- High-precision positioning

Fleet Capability (Optional)

- Multi-AGV coordination
- Centralized fleet management
- Real-time monitoring and scheduling

Smart Power System

- 48V DC battery system
- Runtime: 8–12 hours (payload dependent)
- Efficient energy management

System Architecture

AGV → Sensors → Controller → Fleet → ERP

- Sensor fusion (LiDAR + camera vision)
- Real-time onboard processing
- Integration with ERP / WMS systems

Integration & Customization

- ERP / WMS / MES integration
- Custom payload modules (rack, conveyor, towing)
- Industry-specific configurations
- Scalable deployment architecture

Deployment & Support (via GTC INC)

- Site survey & workflow analysis
- Pilot deployment
- Operator training support
- Maintenance & lifecycle support

Deploy Intelligent Automation with Confidence

Partner with **GTC INC – Global Trade Connect** to implement **Cybernetics AGV solutions** tailored to your operational needs—backed by engineering expertise, proven deployment experience, and long-term support capability.

📧 **Contact:** contact@globaltradeconnect.net

Service & Support Excellence

- **Engineering-Led Technical Support**

Solutions are backed by experienced engineers from Cybernetics Hi-Tech Solutions, ensuring deep product knowledge and responsive technical assistance throughout the lifecycle.

- **End-to-End Deployment Support**

From initial site assessment and workflow analysis to installation, testing, and commissioning, the system is implemented with a structured and proven approach.

- **System Integration Expertise**

Seamless integration with existing operational workflows and enterprise systems (ERP/WMS/MES), minimizing disruption and accelerating adoption.

- **Training & Knowledge Transfer**

Comprehensive operator and technical training programs to ensure safe usage, efficient operation, and long-term self-sufficiency.

- **After-Sales & Lifecycle Support**

Ongoing maintenance, troubleshooting, and system optimization to ensure maximum uptime and performance reliability.

- **Scalable & Future-Ready Solutions**

Designed to grow with operational needs, with support for system upgrades, expansion, and evolving automation requirements.

Technical Specifications

Parameter	Specification
Manufacturer	Cybernetics Hi-Tech Solutions
Marketing & Integration	GTC INC – Global Trade Connect
Payload Capacity	100 / 500 / 1000 kg
Navigation System	LiDAR + Vision-guided (AI-based)

Parameter	Specification
Battery Type	48V DC
Operating Time	8 – 12 hours (payload dependent)
Charging System	Industrial plug-in charging
Operation Mode	Indoor & Outdoor
Control System	Autonomous with optional fleet control
Obstacle Detection	Real-time sensor fusion
Communication	Wireless (Wi-Fi / Industrial network)

Rendimiento Confiable para Laboratorios Dentales y Clínicas de Alto Desempeño



Confiable. Eficiente. Listo para crecer.

GENCORE

MillFix

LA REALIDAD DE LOS LABORATORIOS HOY

No todos los laboratorios necesitan inteligencia artificial, pero todos necesitan:

Confiableidad

Facilidad de uso

Resultados consistentes

Escalabilidad accesible

El mayor reto:

Encontrar un sistema que logre el equilibrio ideal entre **rendimiento, costo y simplicidad**

PRESENTAMOS MILLFIX™

Diseñado para ofrecer resultados consistentes sin la complejidad de sistemas de alta gama.

El **GenCore MillFix™** es una solución de producción pensada para laboratorios que buscan **precisión, confiabilidad y eficiencia, sin complicaciones innecesarias.**

Desempeño confiable día a día

Operación sencilla para cualquier técnico

Compatibilidad con distintos materiales

MillFix ofrece el rendimiento que necesitas, sin complicaciones.

¿POR QUÉ MILLFIX™?

Muchos equipos en esta categoría implican compromisos:

Demasiado básicos → capacidad limitada

Demasiado complejos → operación difícil

MillFix rompe ese esquema. Está diseñado para ser:

Fácil de operar

Estable en producción

Eficiente a escala

DISEÑADO PARA LA CONSISTENCIA

Flujos de fresado optimizados

Sistema de movimiento estable

Procesamiento confiable de materiales

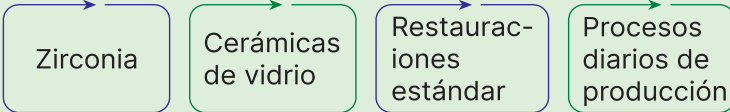
Resultado: Resultados predecibles en el trabajo diario



Sistema de calibración automatizado que asegura un rendimiento constante con mínima intervención.

RENDIMIENTO DIARIO QUE MARCA LA DIFERENCIA

MillFix está diseñado para trabajar con:

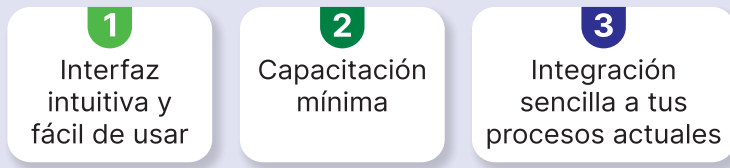


Ideal para:

- Laboratorios pequeños y medianos
- Laboratorios en crecimiento
- Laboratorios que buscan actualizar su equipo

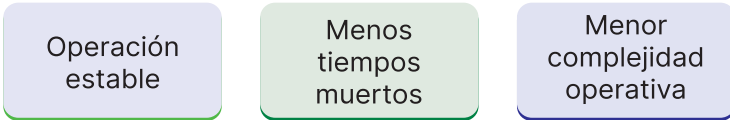
SIMPLICIDAD OPERATIVA

Compatible con software CAM líder como **hyperDENT** y **MillBox**

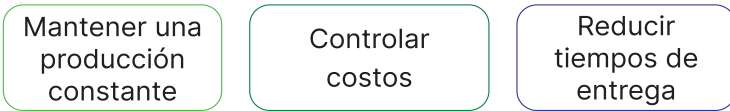


Resultado: — Tu equipo puede **comenzar a producir desde el primer día**

EFICIENCIA QUE REALMENTE IMPORTA



Permite a tu laboratorio:



¿DÓNDE ENCAJA MILLFIX?

Ideal para:

- ✓ Laboratorios que inician en fresado digital
- ✓ Laboratorios que buscan ampliar su capacidad
- ✓ Laboratorios que necesitan un segundo equipo confiable

CARACTERÍSTICAS DE HERRAMIENTAS

Cambiador automático de **15 herramientas**

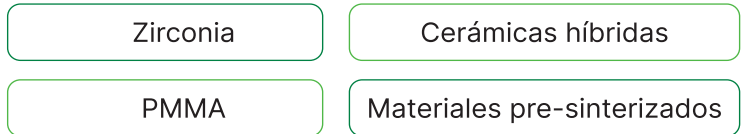
Fresado a **90°** para mejor acceso y calidad

Husillo DC de **800W** de alto rendimiento



MATERIALES

Diseñado para trabajar con materiales blandos como:

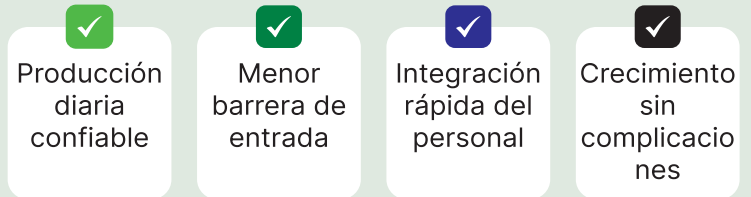


IMPACTO EN TU NEGOCIO

Con MillFix, tu laboratorio obtiene:

Producción más predecible. Mejor control de costos.

Beneficios clave:



Todas las especificaciones técnicas y los datos de rendimiento son proporcionados por el fabricante. GTC INC. no asume ninguna responsabilidad por la exactitud o integridad de las especificaciones del fabricante.

“ MillFix te brinda el rendimiento que necesitas, sin complejidad innecesaria. ”



Agenda una evaluación en línea y descubre cómo MillFix puede integrarse a tu flujo de trabajo.

- 🌐 globaltradeconnect.net
- ✉ contact@globaltradeconnect.net



The First AI Dental Milling Machine

Built to help labs scale with confidence.

Precision alone is no longer enough.
Welcome to **intelligent manufacturing**.

For lab owners, this means:

- Supports technicians by simplifying calibration and improving consistency
- More predictable results across cases
- Scale production without increasing staff

THE INDUSTRY IS CHANGING

Dental labs are undergoing a fundamental shift:

<p>Technician shortages are accelerating automation</p>	<p>AI-driven workflows are becoming the new standard</p>	<p>Labs must produce more with fewer people</p>	<p>Consistency is now more valuable than speed</p>
---	--	---	--

The next generation of labs will be defined by **automation, intelligence, and repeatability**

INTRODUCING M-AI™

The **GenCore M-AI™** is the first AI-integrated dental milling machine, built to deliver:

Consistent results across operators	Automated calibration and error correction	High precision implant and prosthetic production
-------------------------------------	--	--

This is a production system for modern labs.
It is a **production system designed for the future of dentistry**



AI CALIBRATION THE BREAKTHROUGH

Traditional milling relies heavily on manual calibration and operator setup

M-AI™ changes that.

AI Calibration System:

Automatically detects jig positioning	Identifies subtle setup variations	Adjusts machining coordinates in real time
---------------------------------------	------------------------------------	--

Result:

Reliable, repeatable precision every time

As highlighted in the system documentation, AI calibration can detect even subtle setup deviations and correct them to maintain machining accuracy

The problem is not speed - it's consistency.

WHY IT MATTERS

AI Calibration is a built-in system within M-AI that automatically detects and corrects setup variations to ensure consistent machining accuracy.

This is how labs transition from **craft-based → system-based production**

ENGINEERED FOR PRECISION

- Yaskawa servo motors (all axes)
- Full closed-loop control system
- C5-class ballscrew
- Harmonic drive

INDUSTRIAL GRADE ENGINEERING

M-AI™ is built with true industrial components, not entry-level systems:

- 1 Simultaneous 5-axis machining
- 2 Full Closed-Loop Control System
- 3 400W Yaskawa servo motors (all axes)
- 4 C5-class ballscrew for superior precision
- 5 Harmonic drive for zero-backlash rotation

Translation:

This is **implant-grade accuracy**, not just basic milling.

TRUE 5 AXIS CAPABILITY BUILT FOR COMPLEX CASES

Simultaneous 5-axis machining for complex restorations including implants and bar work.

This is critical for:

- Implant bridges
- Angled screw channel restorations
- Full-arch prosthetics
- High-complexity cases

Result:

- Fewer setups
- Greater accuracy
- Reduced remakes
- Higher-value production capability

Includes **90-degree milling capability** for advanced implant and angled screw channel restorations.”

HIGH PERFORMANCE SPINDLE

1.37kW / 3.7kW spindle (up to 60,000 RPM)

Superior torque stability at low speeds

Performance comparable to higher-class AC systems

Critical for:

Titanium premill

Complex implant restorations

Multi-unit prosthetics



“M-AI™ is not just a milling machine — it's a transition to intelligent production.”



Contact us today to find out how you can experience the AI difference in real production.

globaltradeconnect.net

contact@globaltradeconnect.net

SMART SAFETY & CONTROL

Smart Torque Control System:



Reduces power when door opens



Stops machine under abnormal load

Protects:

Operator safety

Machine longevity

Production uptime

BUILT FOR REAL WORLD LAB PRODUCTION

- Wet & dry milling compatibility
- Multi-slot machining (high throughput)
- Intuitive user interface
- Automated processes reduce human error.

Ideal for:

01

High-mix labs

02

Implant-focused labs

03

Scaling production environments

WHERE M-AI™ STANDS IN THE MARKET

Unlike traditional milling systems that rely heavily on operator skill, M-AI™ integrates AI calibration and closed-loop control to deliver consistent results across users and cases.

This positions GenCore as a next-generation alternative to conventional milling platforms.

BUSINESS IMPACT

With M-AI™, labs gain:

- ✓ Supports technicians by improving consistency and reducing manual calibration variability.
- ✓ Ability to scale production confidently
- ✓ Higher consistency across cases
- ✓ Fewer remakes and errors

This is not a cost — it is an infrastructure investment for future growth.

All technical specifications and performance data are provided by the manufacturer. GTC INC. assumes no responsibility for the accuracy or completeness of manufacturer specifications.

Experience the future of dental milling



GLOBAL NATURAL RUBBER SUPPLY



Natural Rubber Supply, Re-Engineered for Global Industry

We enable manufacturers to secure reliable, high-performance natural rubber through integrated sourcing, logistics, and market intelligence.

A Strategic Material in a Changing Global Market

Natural rubber sourcing is no longer a commodity decision, it's a strategic risk management function. Global manufacturers face increasing pressure from: management function.

- Supply volatility driven by climate and geography
- Increasing performance demands in industrial applications
- Procurement risk tied to inconsistent quality and logistics disruption

Why Natural Rubber Matters

Performance Characteristics

- High elasticity and rebound resilience
- Excellent tensile strength
- Superior abrasion resistance
- Effective shock and vibration absorption
- Strong fatigue resistance under repeated stress

Global Supply Network

Strategically sourced across key producing regions:

- Southeast Asia (Thailand, Indonesia, Vietnam)
- West Africa (Côte d'Ivoire and regional producers)
- Latin America



Secure Your Supply. Reduce Risk. Improve Performance.

Confidential inquiries: contact@globaltradeconnect.net

Value Proposition

We deliver certainty in a volatile global market

- Reliable access to high-quality natural rubber
- Diversified sourcing across global markets
- Reduced supply chain risk
- Consistent performance across applications



Why Buyers Choose GTC

An integrated partner across sourcing, logistics, and strategy

- Integrated sourcing + logistics + trade execution
- Multi-region supplier network
- Deep cross-border negotiation expertise
- Market intelligence embedded in every engagement
- Relationship-driven, long-term partnerships

Applications Across Critical Industries

- Tires and mobility systems
- Conveyor belts and material handling
- Seals, gaskets, and industrial components
- Marine fenders and dock protection
- Electrical insulation and safety systems
- Athletic tracks and performance surfaces
- Infrastructure systems (bridges, seismic bearings)

Application Spotlight: Sports & Performance Surfaces

- Running tracks (IAAF-standard systems)
- Playground safety flooring
- Artificial turf underlayers



Product Forms & Grades

- TSR (Technically Specified Rubber)
- RSS (Ribbed Smoked Sheets)
- Latex concentrates
- Block rubber
- Custom compound inputs

Packaging & Delivery

- Standard bale packaging
- Containerized shipments (20ft / 40ft)
- Bulk shipment coordination
- Custom packaging solutions

End-To-End Supply Chain Execution

In global rubber markets, execution is as critical as sourcing.

- End-to-end export/import coordination
- Containerized and bulk shipment planning
- Port-to-plant logistics alignment
- Customs documentation and compliance
- Multi-origin sourcing strategies
- Inventory planning and buffer stock models

Sustainable & Responsible Sourcing

- Ethical sourcing practices
- Transparent supply chain engagement
- Long-term sustainability alignment

Engineered Solution & Application Support

- Application-specific performance optimization
- Compound alignment
- Manufacturing integration support

Key Demand Sector

- Mobility & Transportation
- Infrastructure & Construction
- Industrial Manufacturing

We work closely with our partners to align supply, performance, and long-term objectives.



EXECUTIVE BUSINESS ENGLISH & GLOBAL COMMUNICATION



Elevating Communication. Strengthening Global Partnerships.

In today's global business environment, success depends on the ability to communicate with clarity, confidence, and credibility across cultures.

GTC Inc. delivers Executive Business English and Global Communication Coaching for professionals operating in international environments.

Our coaching focuses on real-world application, including meetings, presentations, negotiations, and conversational communication essential for building trust and relationships.

WHY THIS MATTERS

Even highly capable professionals often experience a gap between their expertise and their ability to communicate clearly in English.

This gap can limit performance, slow decision-making, and reduce confidence.

GTC Inc. transforms communication from a barrier into a strategic advantage.



CLIENT TESTIMONIAL

CHEMICAL ENGINEER (MEXICO)



“ He creates a dynamic and meaningful learning experience, building trust, confidence, and real personal growth. His impact goes far beyond the sessions he provides. ”

CORE COACHING SERVICES

Executive Business English

Meetings, presentations, and negotiations.

Professional Writing

Clear and concise business communication.

Conversational Communication

Build confidence in informal discussions and networking.

Executive Presence

Communicate with clarity and confidence.

Cross-Cultural Communication

Navigate global communication styles effectively.

WHO THIS PROGRAM IS FOR

- Non-native English-speaking professionals
- Executives and managers working globally
- Professionals in international business environments
- University students preparing for global careers
- Individuals seeking greater confidence in communication



OUR DIFFERENCE

Fully customized coaching (not generic training)

Real-world business application

Immediate practical impact

Individuals seeking greater confidence in communication

TESTIMONIALS

“★★★★★
I now communicate with far greater confidence in meetings and presentations with global teams.
- Senior Merchandising Manager (South Korea)

“★★★★★
I approach professional conversations and presentations with far more confidence than before.
- Associate, Private Equity (Japan)

“★★★★★
I now participate more actively in meetings and can clearly articulate complex ideas.
- Principal Scientist, Biotech Industry (South Korea)

“★★★★★
Participants developed the confidence required for effective professional communication.
- COO, Consulting Firm (Mexico)

THE PATH TO CONFIDENT COMMUNICATION

Understanding English → Clarity → Confidence → Influence Client Outcomes Commonly Include

Greater confidence in meetings and presentations

Clear articulation of complex ideas

Stronger executive presence

Improved communication across teams

Confidence in both formal and informal conversations

GTC Inc. enables professionals to move from understanding English to communicating with clarity, confidence, & global impact.



CONTACT & NEXT STEPS

Contact us to explore customized executive coaching solutions tailored to your organization.

✉ contact@globaltradeconnect.net

GTC INC SIGNS 'LOU' WITH GOOTIPA:

Advancing Ethical Manufacturing and Women's Empowerment in Bangladesh



In a significant step toward responsible global partnerships, GTC INC has officially signed a Letter of Understanding (LOU) with Gootipa—a fast-growing, purpose-driven fashion brand based in Dhaka. This collaboration reflects a shared vision: combining commercial excellence with meaningful social impact.

At the heart of this partnership is Taslima Miji, an award-winning SME entrepreneur and founder of both Leatherina Pvt Ltd and Gootipa. After spending two decades in the technology sector, Taslima made a bold transition into fashion in 2016—bringing with her a systems-thinking mindset and a deep commitment to sustainability and gender equity.



Women power the majority of leather goods production - driving quality, equality, and impact.

What began as a homegrown initiative has evolved into a recognized Bangladeshi brand producing stylish, affordable leather goods tailored for modern, urban professional women. Gootipa's success is not only measured in its growing market presence, but also in the values it champions.



Company founder Taslima Miji & son Avner Naireet host GTC INC Associates in Dhaka, Bangladesh factory

A Model for Ethical and Inclusive Growth

Gootipa stands out as a 100% "Made in Bangladesh" brand, prioritizing local craftsmanship, resource efficiency, and economic empowerment. Its production model actively reduces import dependency while strengthening domestic industry—a mission aligned with broader national development goals.

More importantly, the company has become a powerful example of gender-inclusive manufacturing. Under Taslima's leadership, Gootipa has built a workplace culture that prioritizes the recruitment, training, and advancement of women. The company is committed to ensuring equal pay, safe working conditions, and opportunities for career growth—principles that remain underrepresented in many manufacturing ecosystems.

This focus on women's empowerment is not symbolic; it is structural. From the factory floor to leadership roles, women are given the tools and platform to succeed, helping reshape norms within Bangladesh's industrial landscape.

Inspiration for the Next Generation

The LOU between GTC INC and Gootipa marks more than a business agreement—it signals a strategic alignment around sustainability, ethical sourcing, and inclusive economic participation. GTC INC's engagement with Gootipa reinforces its commitment to partnering with organizations that integrate social responsibility into their core operations.

Through this collaboration, both entities aim to explore opportunities for scaling production, expanding global reach, and amplifying the impact of ethical manufacturing practices. The partnership also underscores the growing importance of supporting women-led enterprises in emerging markets.



A Model for Ethical and Inclusive Growth

Taslima Miji's journey—from tech professional to fashion entrepreneur—continues to inspire a new generation of leaders across Bangladesh and beyond. Her work demonstrates that profitability and purpose are not mutually exclusive, but rather mutually reinforcing.

As Gootipa continues to grow, it carries forward a powerful message: that businesses rooted in equality, sustainability, and local empowerment can compete—and lead—on a global stage.



Closing Notes

The views and observations shared in this edition of **CHECKPOINT** reflect the personal perspectives and professional experiences of the author. They are intended to encourage reflection, dialogue, and understanding around global trade, leadership, and cultural engagement.

This edition of **CHECKPOINT** was developed with the support of AI-assisted drafting and image-generation tools. All viewpoints, interpretations, and final editorial decisions reflect the judgment and experience of the author.

GTC INC does not endorse any political party, political ideology, or religious belief. We are committed to inclusivity and respect for all cultures, backgrounds, and perspectives. Our work is guided by a belief in free, fair, and sustainable trade, and in the value of products, partnerships, and leadership practices that contribute positively to overall quality of life.

Comments or feedback are welcome.
Please feel free to contact us at contact@globaltradeconnect.net.

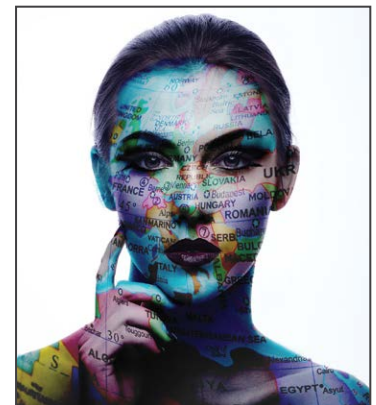


Our Mission

GTC Inc. is a Canadian-based international trade and market-entry firm built on trust, clarity, and strong relationships. We connect manufacturers, distributors, and buyers across global markets, serving as a strategic bridge between regions and cultures.

We support sourcing, distribution, negotiation, and market expansion, working closely with partners to align objectives and build long-term success. Our integrated approach combines trade representation with executive communication, leadership coaching, and cross-cultural insight to strengthen negotiations and collaboration.

Led by a Canadian team with over 100 years of combined international trade experience, GTC Inc. delivers practical expertise and relationship-driven execution worldwide.



Your trusted partners



Connect with GTC INC

Website:

www.globaltradeconnect.net

Facebook:

www.facebook.com/GTCINC.GlobalTradeConnect

LinkedIn:

www.linkedin.com/company/gtc-inc-globaltradeconnect

