

More than just compact.
Ahead of its time.



| Various application

Materials

Capable of precisely milling a wide range of soft materials, including zirconia, PMMA, hybrid ceramics, and pre-sintered metals.

Tools

With 15 types of milling tools, even complex prostheses—including multi-unit interface abutment bridges and angled screw channels—can be precisely machined.

Milling angles

The 90-degree milling capability significantly enhances the quality of output.

CAM software compatibility

Fully compatible with two CAM software: hyperDENT & MillBox.

Auto Calibration

With its fully automated process and user-friendly UI, GenCore's Auto Calibration makes it possible for any user to consistently maintain machine precision.

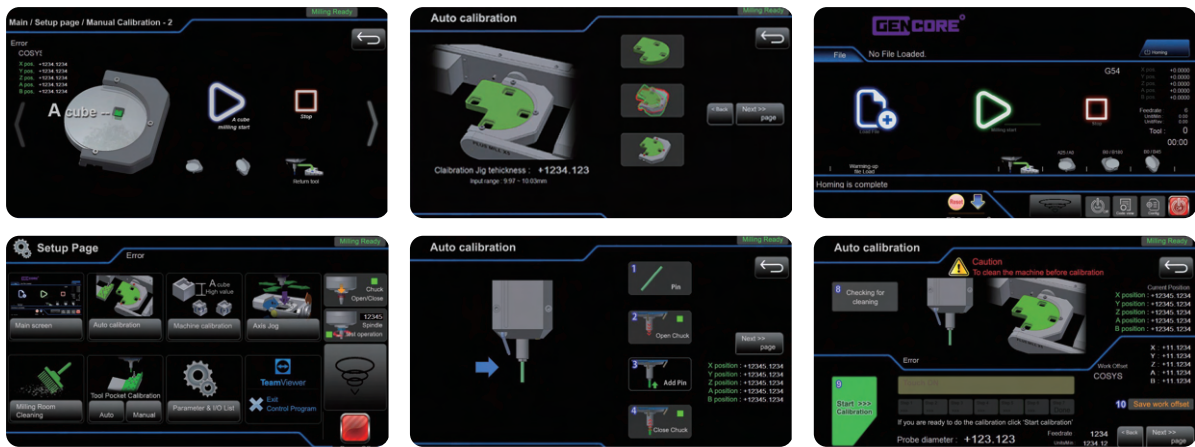
DC 800W Spindle - Stable & Elaborate

High-performance DC 800W spindle from SycoTec, Germany, features a robust design that guarantees superior reliability and outstanding heat resistance. This enables precise processing of even the softest materials.



Intuitive User interface

Embodying GenCore's core philosophy, our intuitive interface design helps users operate the equipment with ease and efficiency.



Specification of MilFix^o		
Milling type	Dry	
Dimensions	426 x 520 x 579.5mm	
Weight	42kg	
Spindle motor	800W DC Type 60,000 RPM	SycoTec / Germany
Number of Axis	Simultaneous 5-axis	
Motor	Stepping motor	
Traverse paths	X-axis : 158mm Y-axis : 124mm Z-axis : 101mm A-axis : +25° to -25° B-axis : 360° (Free rotation)	
Tool Pocket	15 ea	Tool shank Ø 4mm
Power (Input)	AC 110V & 220V, 3~5A, 50/60Hz	Switch toggle
Monitor	10.1" LCD Touch Monitor	

